



# ExcluDoor<sup>®</sup> 6

CERTIFIED TO LPS 1175 ISSUE 7 LEVEL SR6

A wide range of single, leaf-and-a-half and double security doorsets available with single point locking and ExcluGlass<sup>®</sup> 6 vision panel.



SECURITY




## Applications

- MOD premises
- Banks
- High value retail outlets
- Strategic utility buildings
- Police stations
- Building societies



# ExcluDoor® 6

## Features

- The only company able to offer this security rating for a single point lock on single and double leaf doorsets.
- Electro-zinc coated steel for maximum corrosion resistance.
- Police Preferred Specification. 
- Tough recessed stainless steel hinges with anti-crushing fixing and independent dog bolts.
- Anti-lever cover strip to closing edge of door leaf.
- The only company to offer this level of security with the option of ExcluGlass® 6 vision panel.

## Locking Options

- The ExcluDoor® 6 range of security doorsets are available with a number of locking options.
- Key driven.
- A range of compatible cylinders are available.

## Frame Construction

Welded construction.

**Material:** 1.5mm electro-zinc coated steel steel.

**Profile:** Single rebated 45mm x 100mm.

**Reinforcing:** At hinges, lock keeps and fixing points.

## Door Leaf Construction

**Material:** 1.5mm electro-zinc coated steel incorporating additional internal drill resistant protection plate to attack face.

**Size:** 45mm thick composite door leaf with anti-lever cover plate to closing edge.

**Weight:** Approximately 90kg per square metre.

Minimum of 4 Stainless Steel hinges tested to EN1935: 2002 Grade 13, endurance tested to over 2 million cycles, recessed into door leaf.

Independent hardened steel hooked dog bolts with reinforced anti-crush fixing are also incorporated with the hinge jamb assembly.

## Finish

One coat of grey etch primer as standard for on-site finishing or there is the option of a wide selection of powder coated colours from our own factory powder coating facility.

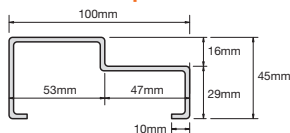
## Optional Extras

Optional extras are available including external lever handles, weather/smoke seal, kick and push plates, alarm contacts and electronic lock status monitoring.

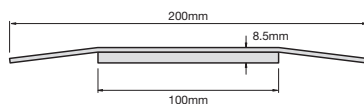
## Structural Opening Sizes (mm)

|             | Min width | Max width | Min height | Max height |
|-------------|-----------|-----------|------------|------------|
| Single leaf | 750       | 1240      | 1800       | 2400       |
| Double leaf | 1240      | 2400      | 1800       | 2400       |

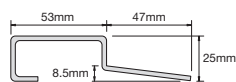
## Threshold Options



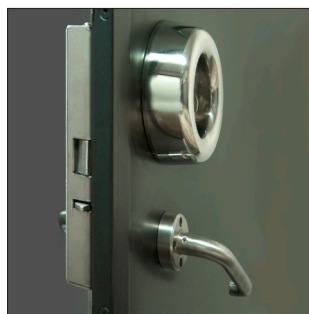
Standard frame profile.



Standard low level threshold.



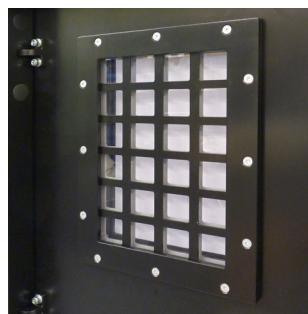
Low level threshold with stop.



*External locking option with lever handle and cylinder guard and internal single point lock.*

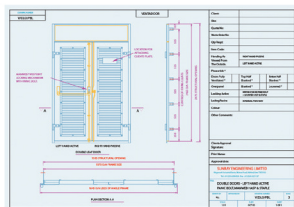


*Robust recessed stainless steel hinges (left). Integrated hooked dog bolt (right).*



*Can incorporate ExcluGlass® 6 vision panel.*

## Bespoke design services



Complementing our standard door ranges we also offer a complete, bespoke design service to suit specific client needs or to overcome site/building constraints.

## Sunray installation service



We offer an installation service covering our steel door, louvre systems and ExcluDoor® security door ranges.

Work is carried out by our own qualified factory-skilled operatives, not sub-contractors.

Procedures are audited and our installation process is approved and certified by CHAS, Safe Contractor, Achilles Builders Confidence and Achilles UVDB.

Sunray's Installation Service is certified by the LPCB/BRE to LPS 1271 for security doors.

## Nationwide delivery service

Specialist transport including arctics, curtain sidlers with Moffett facility, flat bed lorries with HIAB facility and lightweight vans including Crossrail compliant vehicles.



External locking options of lever handle and high security cylinder guard.



Sunray Engineering Ltd  
Kingsnorth Industrial Estate  
Wotton Road, Ashford, Kent TN23 6LL

T 01233 639039

E sales@sunraydoors.co.uk

www.sunraydoors.co.uk



FIND OUT MORE  
FROM THE SUNRAY  
WEBSITE

