



FireLock®

A range of outward opening single and double fire doorsets available with removable overpanels which are ideal for high fire-risk installations.



FIRE



INDUSTRIAL



Applications

- Sub-stations
- Electrical utility rooms
- Gas cylinder storage
- Plant rooms
- Transformer chambers
- Oil stores
- Pump rooms



FireLock®

Features

- Four hour fire rating.
- Tested in accordance with BS 476 Part 22, 1987.
- Robust construction, simple to operate and low maintenance.
- Assembled and tested prior to leaving the factory, including panic bars (if fitted).
- Available as single or double fire doors with or without overpanel.
- Removable overpanel and transom.
- Various locking options are available with or without external access.
- FireLock® fire doors are supplied with fixings.
- Left or right hinge available.
- Heavy duty angle frame.
- Secure locking systems.

Construction

Frame: 80 x 80 x 8 mm mild steel angle.

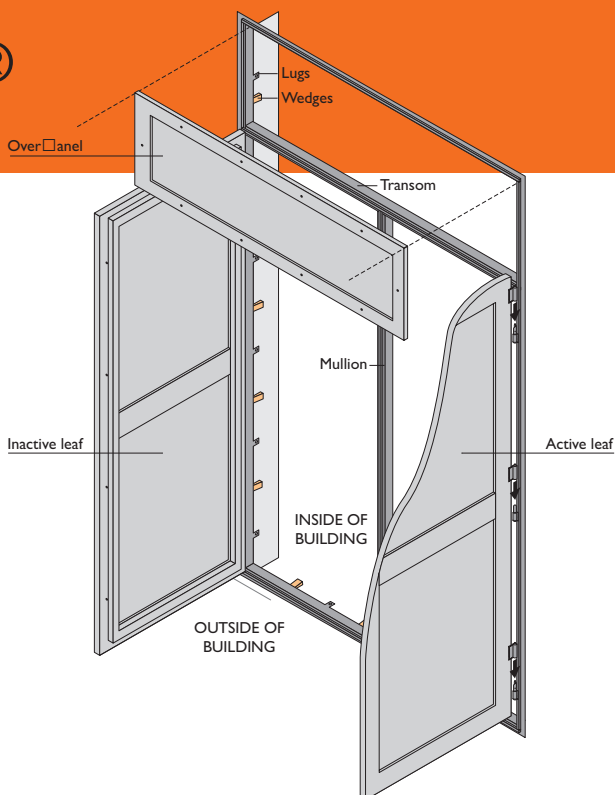
Door leaves: 6 mm mild steel plate with 100 x 6 mm flat bar, welded to both sides to give strength and rigidity.

Over Panels: 6 mm mild steel plate with 100 x 6 mm flat bar, welded to both sides to give a panelled appearance. Bolted in place with locknuts to rear.

Double Doors: have heavy duty channel mullion, bolted into place. Inactive door leaves also bolted onto the mullion.

Finish

One coat of red Zinc Phosphate primer finish as standard for on-site painting. Factory powder coating is not available for these doors.



Hinges

Two heavy duty rising butt hinges with one plain hinge to ensure closure of the active leaf. The inactive leaf has three plain hinges. All hinges are welded into position.

Door Furniture

Internal three point operation, heavy duty mild steel locking assembly secured by external padlockable handle or alternatively padlocked internally without external access. OR

Surelock McGill three-point locking panic bar system to internal face with padlockable Sunray 6000 Hasp and Staple to external face allowing escape from inside and keyholder access from outside.

Fixings

Frames are supplied complete with flat post-fit lugs with integral fixing plate system.

14 mm diameter holes are provided for M12 sleeve-type anchors (supplied), 75 mm of which should be located within the supporting structure.

Mastic

In order to achieve 4-hour fire rating it is necessary to seal around main frame with 4-hour intumescent mastic (not supplied).

Supporting Structure

Frame must be fitted into brick or reinforced concrete that has been tested or assessed to an excess of 4 hours fire resistance, usually with a minimum 150 mm high threshold.

Framework

The angle framework wraps around the opening, requiring an upstand, lintel and clear wall space to either side. The door leaf is mounted in front of the frame and is larger than the opening.

Dimensions and Weights (mm)

Door type	Code	Dimension Structural Opening	Dimension Finished Frame (internal)	Clear Opening	Leaf weight	Frame weight	Overpanel weight	Fixings
Single leaf	S	760 x 2070	750 x 2060	734 x 2044	179 kg	90 kg		2 head 4 per jamb 2 threshold
Single leaf Metric	SM	798 x 2175	788 x 2165	772 x 2149	185 kg	100 kg		2 head 4 per jamb 2 threshold
Single leaf with Overpanel	SX	910 x 2550	900 x 2540	884 x 2524	190 kg	120 kg	50 kg	2 head 5 per jamb 2 threshold
Double leaf	D	1550 x 2070	1540 x 2060	1524 x 2044	161 kg	168 kg		4 head 4 per jamb 4 threshold
Double leaf Metric	DM	1585 x 2175	1575 x 2165	1559 x 2149	165 kg	170 kg		4 head 4 per jamb 4 threshold
Double leaf with Overpanel	DX	1550 x 2550	1540 x 2540	1524 x 2524	161 kg	188 kg	78 kg	4 head 5 per jamb 4 threshold



Heavy duty rising butt hinge, the standard hinge for our fire doors.

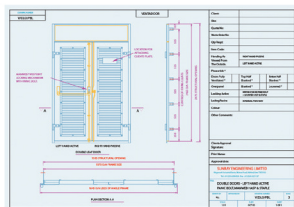


Fire door external locking with Sunray 6000 hasp and staple.



Full width panic bar with 3-point locking.

Bespoke design services



Complementing our standard door ranges we also offer a complete, bespoke design service to suit specific client needs or to overcome site/building constraints.

Sunray installation service



We offer an installation service covering our steel door, louvre systems and ExcluDoor® security door ranges.

Work is carried out by our own qualified factory-skilled operatives, not sub-contractors.

Procedures are audited and our installation process is approved and certified by CHAS, Safe Contractor, Achilles Builders Confidence and Achilles UVDB.

Sunray's Installation Service is certified by the LPCB/BRE to LPS 1271 for security doors.



FireLock® doorset installation.

Nationwide delivery service

Specialist transport including arctics, curtain siders with Moffett facility, flat bed lorries with HIAB facility and lightweight vans including Crossrail compliant vehicles.



Sunray Engineering Ltd
Kingsnorth Industrial Estate
Wotton Road, Ashford, Kent TN23 6LL

T 01233 639039

E sales@sunraydoors.co.uk
www.sunraydoors.co.uk



**FIND OUT MORE
FROM THE SUNRAY
WEBSITE**

