



# Louvre Doorsets

Ventilated steel industrial doorsets available as single, double and bi-fold doorsets with overpanel and side panel options.



INDUSTRIAL



VENTILATION



## Applications

- Sub-stations
- Plant rooms
- Transformer chambers
- Oil stores
- Pump rooms
- Gas cylinder storage
- Rubbish bin stores



# Louvre Doorsets

## Features

- Excellent airflow characteristics.
- Aesthetically pleasing.
- Complements Sunray's Stackable Louvre system.
- Ideal for transformer, plant/generator rooms, refuse stores.
- Powder coated as an option.
- Anti-vermin mesh or blanking to rear.
- Strong fully welded construction.
- Maintenance free lift off hinge system.
- A wide range of robust locking devices available.
- Choice of frame profiles.
- LouvreDoors can be manufactured as single or multi leaf with side panels and/or overpanels.

## Frame

100 x 50 x 3 rectangular hollow section to head & jambs with 100 x 10 flat threshold and lugs for M10 sleeve anchors (supplied).

All welded/fully demountable construction.

Alternative frame profiles available (see drawings opposite).

Hinge parts welded to frame and door leaf.

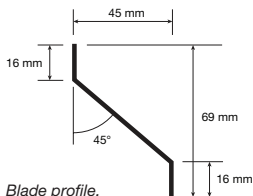
## Leaf

Louvre blades welded into a 50mm x 40mm x 5mm steel angle section framing.

Louvre blades formed to profile shown at bottom of page.

Standard blade thickness is 2.5mm.

Pitch is 50mm.



## Finish

Zinc phosphate primer as standard or there is the option of a wide selection of powder coated colours from our own factory powder coating facility.

## Air Flow

Approximately 50% free air.

## Optional Extras

- Powder coated finish.
- Blanking to rear in lieu of anti-vermin mesh.
- Internal multi-point panic bar with Sunray 6000 with hasp & staple to the outside.
- Demountable frame.
- Mortice lock.

## Standard Furniture

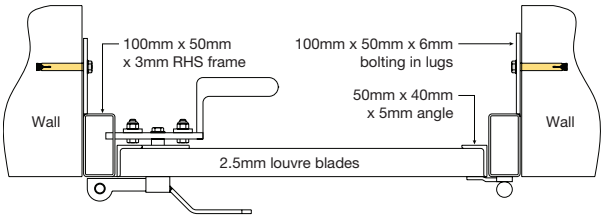
Two heavy duty lift off hinges per leaf and multi-point padlockable handle. Double doorsets will be fitted with sprung draw bolts as well as the above for locking.



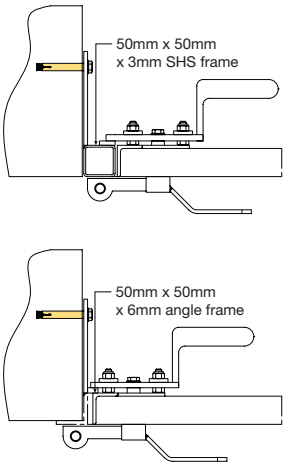
Structural Opening Sizes (mm)

		STRUCTURAL OPENING		FRAME		LEAF		
		Width	Height	Width	Height	Width	Height	
SINGLE	Min	510	1010	500	1000	392	892	
	Max	1410	2410	1400	2400	1292	2292	
						Active	Passive	Height
LEAF-AND-A-HALF	Min	1240	1010	1230	1000	731	387	892
	Max	2140	2410	2130	2400	731	1287	2292
						Width	Height	
DOUBLE	Min	910	1010	900	1000	394	888	
	Max	2710	2410	2700	2400	1294	2288	
						Active	Passive	Height
TRIPLE	Min	1640	1010	1630	1000	731	391.5	892
	Max	3440	2410	3430	2400	731	1291.5	2292
						Active	Passive	Height
4 LEAF	Min	2370	1010	2360	1000	731	389	892
	Max	4170	2410	4160	2400	731	1289	2292

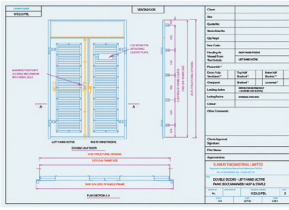
Frame fixing details



Alternative frame profiles



## Bespoke design services



Complementing our standard door ranges we also offer a complete, bespoke design service to suit specific client needs or to overcome site/building constraints.

## Sunray installation service



We offer an installation service covering our steel door, louvre systems and ExcluDoor® security door ranges.

Work is carried out by our own qualified factory-skilled operatives, not sub-contractors.

Procedures are audited and our installation process is approved and certified by CHAS, Safe Contractor, Achilles Builders Confidence and Achilles UVDB.

Sunray's Installation Service is certified by the LPCB/BRE to LPS 1271 for security doors.

## Nationwide delivery service

Specialist transport including arctics, curtain siders with Moffett facility, flat bed lorries with HIAB facility and lightweight vans including Crossrail compliant vehicles.



Rear of Louvre Doorset showing panic bar system and anti-vermin mesh.



Sunray Engineering Ltd  
Kingsnorth Industrial Estate  
Wotton Road, Ashford, Kent TN23 6LL

T 01233 639039

E [sales@sunraydoors.co.uk](mailto:sales@sunraydoors.co.uk)  
[www.sunraydoors.co.uk](http://www.sunraydoors.co.uk)



FIND OUT MORE  
FROM THE SUNRAY  
WEBSITE

