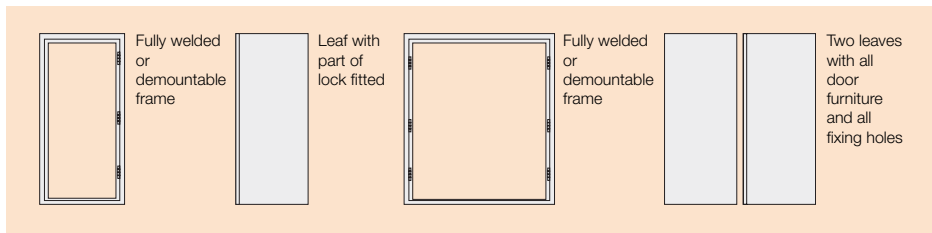


# ExcluLouvre® Door 2 & 3

## Installation & Fitting



### Supplied with the doorset



### Please follow all the instructions carefully

Sunray doorsets are individually made, so check that the ID numbers match on the frame and the door leaf(s). Identification numbers are etched at the top hinge of each leaf and in the same top hinge of the frame.

Before removing the existing doorset, please make sure that the new door will fit the opening by checking the sizes ordered against the new doorset and the structural opening.

#### Tools and accessories required for installation

- Wedges and blocks
- Shims/packers
- 17mm ratchet and/or spanner
- Pozi screwdriver
- Security socket supplied
- Set square
- Spirit level
- Mastic
- Drill and suitable masonry bit

### Handling and care

ExcluLouvre® Doors are usually delivered secured to a pallet on a curtain-sided lorry and can be unloaded using a forklift truck. Care

must be taken when unloading, especially that the forks are positioned correctly and, where possible, extend past the pallet. Ensure that the pallet is set down on even ground making sure there are no objects on the floor that will damage the panels or frame. There are a few points to remember:

- Demountable frame is supplied unassembled.
- The doors must not be used as a table or seated bench whilst stored on a pallet.
- Take care not to damage the handles or anything that protrudes on the surface.
- Do not store in exposed places for long periods and protect from weather.
- Protect doorset from mud, stray mortar and debris.
- Please be aware that these doors are heavy and should be moved in accordance with manual handling regulations.

### Storage

Doorsets on pallets stored for long periods should be checked regularly to ensure that no damage has occurred.

Do not store or stack anything on top of doors and frames.

# Installation

## Preparation of the opening

Measure and check the structural opening in several places to ensure that it is square, level and to the correct dimensions.

These doors are fixed into brickwork, concrete, blockwork or steelwork using fixings suitable for the structure (supplied).

### For ExcluLouvre® Door 2

This may be fitted to other LPS 1175 SR2 rated products manufactured by Sunray.

### For ExcluLouvre® Door 3

This may be fitted to other LPS 1175 SR3 rated products manufactured by Sunray.

**NOTE:**

Equivalent size chemical fixings can be used.

If fixing to steelwork use M10 hexagonal head set screws to the length required.

The fixings must be able to support the weight of the door. The wrong type of fixing can cause the frame to not sit securely and bring about future problems.

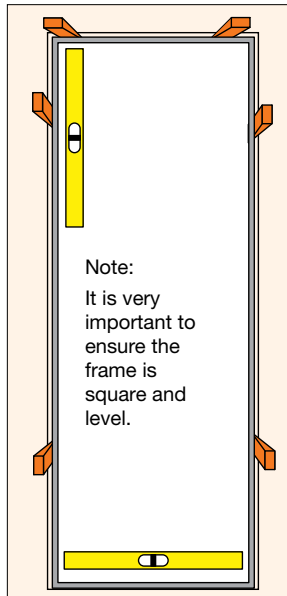
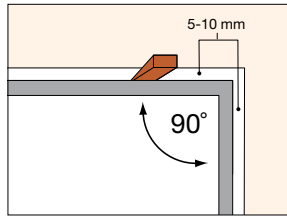
If the brickwork is not yet complete, wooden blocks or spare bricks may be used to support the frame.

The frame can be supplied as a fully welded or demountable frame. Assemble the demountable frame on a surface using blocks to prevent damage to the hinges during assembly.

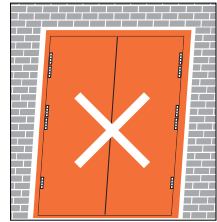
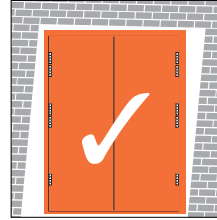
Use the M10 hexagonal head set screws and washers.

Ensure that the frame is square and true. Do not over-tighten the bolts.

The frames must be inserted into the structural opening from the outside of the building.



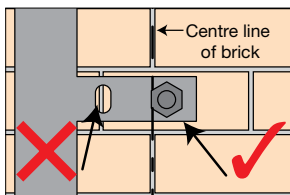
## Alignment



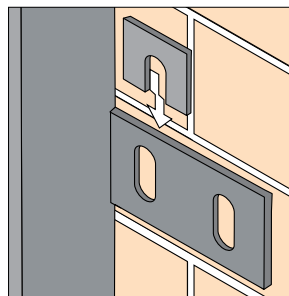
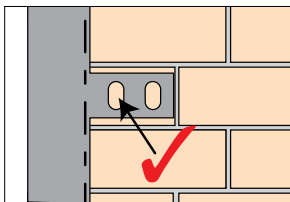
Hold the frame in place using wedges. The wedges must be in line with either the horizontal or vertical members of the frame as incorrect positioning can lead to the frame being bent or distorted.

## Select the correct hole in the lug

The frame should be fixed with M12 x 75mm sleeve anchor bolts (supplied) through lugs (welded to the frame) or through frame fixing. This choice will be dependent on the cavity situation (use only 1 sleeve anchor bolt per lug).



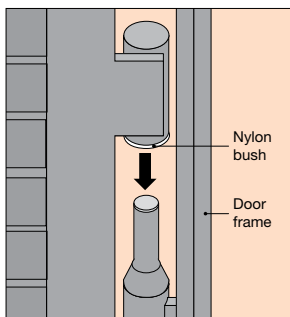
If fixing to brickwork, the frame must be fixed with the hole nearest to the centre of a brick as possible, to ensure maximum secure fixings.



**NOTE:**  
Gaps between structural opening and frame must be packed with steel shims.

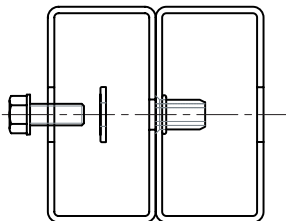
## Hanging door leaf(s)

The door leaf(s) are simply fitted onto the hinges. Nylon bushes are already pushed into the female part of the hinge to create zero maintenance.



## Method for fixing multi-banks

When fixing to an adjacent ExcluLouvre® Door or ExcluLouvre®, this method of fixing is to be used.



## ExcluLouvre® Door troubleshooting

Problem	Possible cause	Corrective Action
Doors do not fit in frame.	Wrong door being offered.	Check the ID numbers to ensure they are all the same.
Doors will not drop onto hinges.	Male and/or female hinges bent.	Re-align.
	Frame bowed.	Shim frame to bring square.
Doors will not close.	Mortar fouling closing surface.	Clean out and re-try.
Doors will not shut to frame at top and/or bottom.	Frame out of square.	Correct by shimming as necessary.
	Door bent in storage.	Straighten.
	Hinges damaged.	Re-align.
Door handle fouls louvre or stiffening bar on back of door.	Handle bent during handling.	Straighten handle.
Draw bolts will not engage in the frame.	Debris fouling receiving hole.	Clean out and re-try.
	Frame not level or square.	Correct by shimming.
Door leaves not level at centre.	Frame not level or square.	Correct by shimming.

For further technical details of all our locking systems refer to [www.sunraydoors.co.uk](http://www.sunraydoors.co.uk)