

# Stackable Louvre

## Installation & Fitting



Please follow all the instructions carefully, they have been designed for installation to be completed quickly at the first attempt.

Stackable louvres are made so that the bottom and middle panels remain a set height while the top panel changes to suit the structural opening.

If the assembly has a frame this will be stamped with an ID number. The panels are labelled by width and position on the packaging.

### Tools and accessories required for installation

- Wedges and blocks
- Shims/packers
- Set square
- Spirit level
- Drill and suitable masonry bit
- Pozi screwdriver
- 13mm and 17mm spanner
- Mastic

### Handling and care

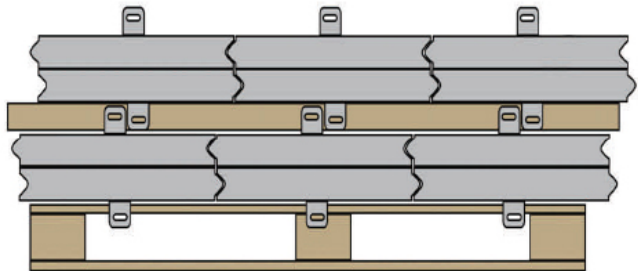
Stackable louvres are usually delivered secured to a pallet on a curtain sided lorry and can be unloaded using a fork lift truck.

If delivery is on an open-backed lorry they can be un-loaded by crane using slings. Make sure no damage occurs to the panels and frames from the lifting operation.

- Please be aware that these panels are heavy and should be moved in accordance with manual handling regulations.
- Take particular care not to damage the lugs.
- Do not store in exposed places for long periods and protect from weather.
- Protect panels and frame from mud, stray mortar and debris.

### Storage

Stackable panels should be stored on the palette in a dry safe area until required. Do not store or stack anything on top of the panels/frames.



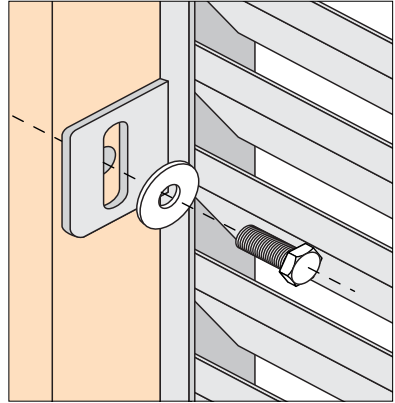
## Before starting

Upon delivery of stackable louvres, do not remove packaging until ready to fit. This is for protection and identification purposes.

Where the assembly has a frame, this must be fitted into the structural opening ensuring it is square and level.

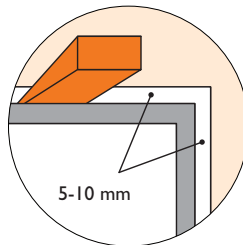
The panels will have lugs with one slot.

The frame will be fitted with countersunk open-end rivets for bolting the panels in place through the lugs using M8 hexagonal head set screws and washers (supplied).

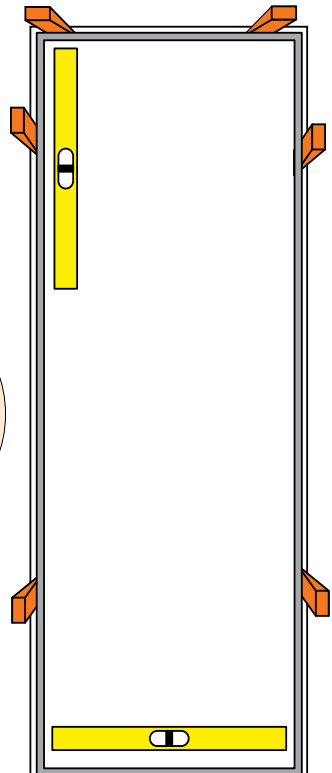


## Position the panel frame (if applicable)

Hold frame in place with wedges.



**NOTE:**  
It is very important to ensure the frame is square and level.



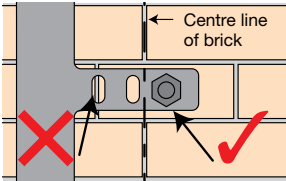
## Select the correct hole in the lug

### FRAME OPTION

The frame should be fixed with M12 x 75mm sleeve anchor bolts (supplied) through lugs welded to the frame or through frame fixing. This choice will be dependent on the cavity situation. (Use only 1 sleeve anchor bolt per lug).

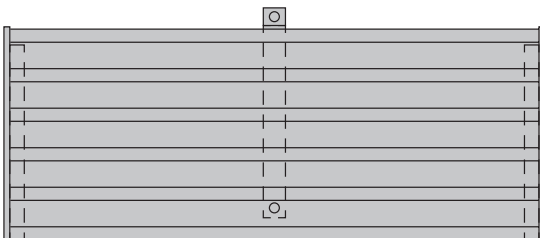
### NO FRAME OPTION

If assembly has no frame, use M8 sleeve anchors (supplied). Shims may be required to pack out the lugs. The lugs will have slots, lug lengths as supplied. This is to avoid mortar lines (as below).



### STIFFENING

If the panels are over a pre-defined width, a stiffening strap or straps will be used. These are welded to the louvre blades. There will be an M8 hexagonal head set screw in place which will need to be removed before fitting the panels. This must be replaced and tightened upon assembly.



## Fitting the panels

### TOP PANEL

The top panel will be identified on the packaging and may be taller or shorter than previous panels. These panels will be tilted to fit rather than drop fitted (right).

The top panels can be 'face' fixed as an option using M6 cap head screws and front face fixing lugs (right) if access to the rear is limited.

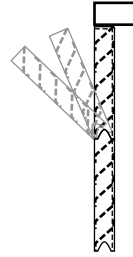
### MIDDLE PANELS

The mid panel(s) will again be identified on the packaging.

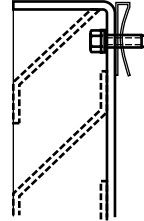
These panels will tend to make up most of the assembly. Regardless of quantity, they are all the same. These simply slot on top of the previously fitted panel.

### BOTTOM PANEL

The bottom will be identified on the packaging or by the Sunray plaque on the bottom louvre blade. Fit this panel first. This will simply slot into place. Ensure panels are square, level and even.



TOP PANEL FITTING



FIXING THE TOP PANEL USING FIXING LUGS



TOP PANEL



MIDDLE PANEL



BOTTOM PANEL

## Two or more panels wide

If the assembly is to be two or more panels wide vertical supports will be necessary.

These are constructed of 50 x 50 SHS, bolted to structure via 6mm lugs at top and bottom using M10 sleeve anchors (supplied).

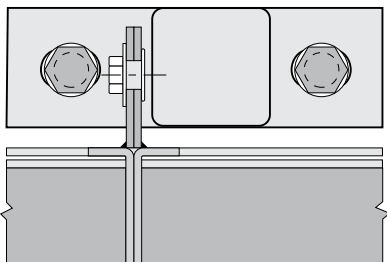
The panels will then be bolted through their lugs into these pre-drilled supports which can be handed if required.

## Installation

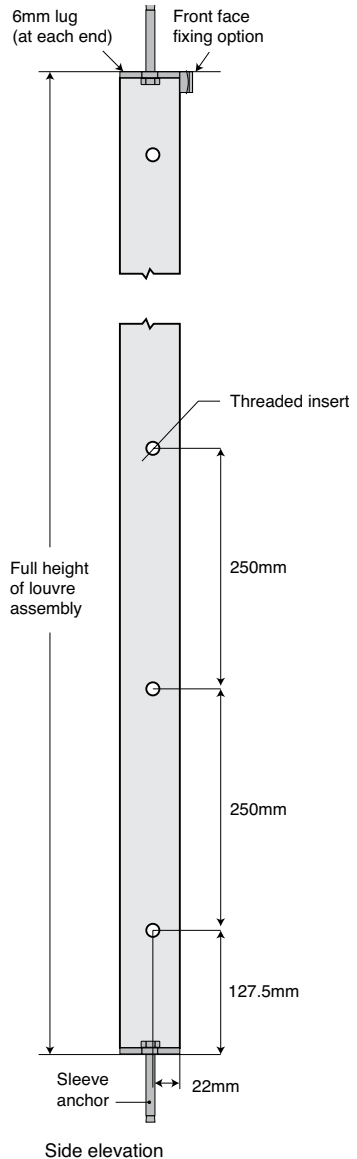
Place the bottom panels of each section into the opening. The two-slot lugs to the extremes, the single slot lugs together in the centre. This is where the vertical lugs are to be placed, to one side of both lugs, not in between. When fit is confirmed, drill the holes.

For the supports, fix in place with sleeve anchors. Loosely fix the central lugs to the supports with a nut and bolt with a washer either side (you may need a box spanner for this).

Check the front is still straight and square before drilling and fixing in with sleeve anchors in the outside lugs. When all the panels are in tighten all the bolts.



View from above



Side elevation