



Accessories

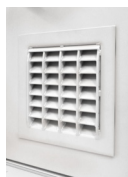
Sunray have designed a range of supplementary products to complement their ranges of security and industrial doors.



**Sunray 6000
Hasp & Staple**



**Barrel/Drop
Bolts**



ExcluVent®



KeyBox



ExcluGlass® 4 FR

ExcluGlass® Vision Panel for SR2, SR3, SR4, SR5 and SR6 Security Doors

Sunray vision panels are suitable for situations where both security and vision are important.

Applications include hospitals, schools, universities, banks and high value retail outlets. Secure vision panels offer discreet observation by natural surveillance whilst providing security and privacy.

Sunray's security-rated doorsets meet all the requirements of all security-conscious markets including mental health institutions, banks and prisons.



ExcluVent® Ventilated Panel for SR3, SR4 and SR5 Security Doors

ExcluVent® ventilated panels allow 53% free airflow through the door whilst still providing security. They are manufactured using reinforced steel welded construction with anti-vermin mesh fitted to rear. The louvred area is 400mm x 400mm.

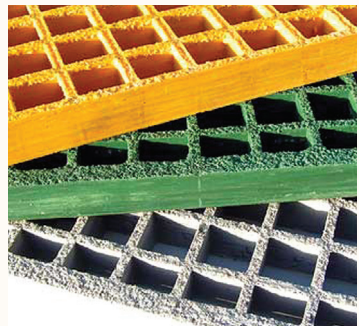
Certified to LPS1175 Issue 7
SR3, SR4 and SR5.



GRP Gratings

GRP Gratings are manufactured from glass reinforced thermoset resins, and are an excellent choice to replace conventional steel and aluminium flooring systems in aggressive/hazardous environments.

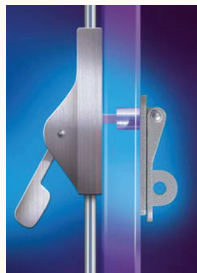
They provide an efficient and cost effective solution for all flooring, composite walkways and decking areas requiring long term performance in very aggressive and corrosive/chemical environments.





Sunray 6000 Hasp and Staple with Internal Override for Emergency Exit Doors

The Sunray 6000 Hasp and Staple allows internal escape even when padlocked on the outside. It can be secured with an open shackle padlock up to 12mm diameter and will operate with any panic bolt system with 8mm square operating shaft. It can be used for steel doors on all types of industrial buildings, e.g. sub stations, switch rooms, boiler rooms where emergency exit and padlock locking are required.



The KeyBox



The KeyBox is designed to be fitted horizontally or vertically into brickwork providing a secure place for safe storage of keys and other small items. It is fixed securely into brickwork and screwed into position.

Measuring 150mm x 76mm x 100mm deep it is of strong, all-steel, welded construction.

It uses a Yale euro profile cylinder with registered keys and cylinder.



Barrel/Drop Bolts

The passive leaf on our ExcluDoor® SR3, SR4, SR5 and SR6 range of double security doors can be locked in two ways.

SURFACE MOUNTED BOLT

A surface mounted spring loaded bolt to prevent 'drop' under vibration or attack.

Incorporating anti-tamper and padlockable facilities.

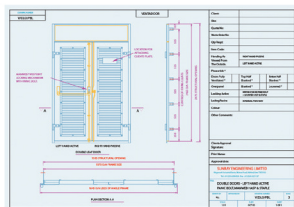


INTEGRAL BOLT

An integral drop bolt, where the bolt is integrated within the door. Has a unique feature where bolt has to be engaged to allow active leaf to be closed and locked.



Bespoke design services



Complementing our standard door ranges we also offer a complete, bespoke design service to suit specific client needs or to overcome site/building constraints.

Sunray installation service



We offer an installation service covering our steel door, louvre systems and ExcluDoor® security door ranges.

Work is carried out by our own qualified factory-skilled operatives, not sub-contractors.

Procedures are audited and our installation process is approved and certified by CHAS, Safe Contractor, Achilles Builders Confidence and Achilles UVDB.

Sunray's Installation Service is certified by the LPCB/BRE to LPS 1271 for security doors.

Nationwide delivery service

Specialist transport including arctics, curtain sidlers with Moffett facility, flat bed lorries with HIAB facility and lightweight vans including Crossrail compliant vehicles.



ExcluDoor® 5 double doorsets fitted with ExcluVent® ventilated panels.



Sunray Engineering Ltd
Kingsnorth Industrial Estate
Wotton Road, Ashford, Kent TN23 6LL

T 01233 639039

E sales@sunraydoors.co.uk
www.sunraydoors.co.uk



**FIND OUT MORE
FROM THE SUNRAY
WEBSITE**

